



WYOMING
STOCK GROWERS
LAND TRUST



ANNUAL REPORT

FISCAL YEAR 2016-2017

LETTER FROM EXECUTIVE DIRECTOR AND BOARD CHAIRMAN

Thanks to your ongoing partnership, engagement, and support, the Wyoming Stock Growers Land Trust has conserved over a quarter-million acres! Every acre conserved is the product of numerous stakeholders including donors, partners, landowners, staff and board.

Conservation easements not only ensure our precious agricultural lands continue producing food, they provide substantial direct and indirect financial benefits. Since 2001, the Wyoming Stock Growers Land Trust has worked with partners like the Wyoming Wildlife and Natural Resources Trust and the Natural Resources Conservation Service to raise over \$54 million dollars to purchase ag-land conservation easements in Wyoming. These dollars go directly into our rural communities and reverberate through local businesses, spurring economic development.

Un-fragmented lands also provide real ecological and economic benefits to the people of Wyoming. These ‘ecosystem services’ include benefits like protected wildlife and fish habitats, water filtration, and flood control, among others. Using recent studies and analysis, we can estimate this public value. The conservation easements held by the Wyoming Stock Growers Land Trust provide an estimated \$132 million in annual public benefits. While these numbers seem staggering, the importance of our Wyoming ag-lands is no surprise, and we are proud to help ensure they remain intact. We encourage you to read the full study and have provided a link to the study at the end of this report.

We are excited to see what next year brings and are enthusiastic to continue our role in the conservation of this place we call home. With your ongoing support we will continue to conserve Wyoming’s agricultural lands, important wildlife habitats, and world renowned views for years to come.

Sincerely,

Bo Alley

Bo Alley
Executive Director



Heath Hunter

Heath Hunter
Board Chairman



BOARD OF DIRECTORS

- Heath Hunter - *Chairman*
Jennie Gordon- *Vice-Chairman*
Janet Marschner- *Treasurer*
Budd Betts - *Secretary*
Jack Berger
Ryan Ford
Rob Hendry
Jim Magagna
Mantha Phillips
Scott Sims
Nels Smith
Kevin Voyles
Annaliese Wiederspahn

STAFF

- Bo Alley
Executive Director
Eric Schacht
Conservation Director
Travis Brammer
Stewardship Coordinator
Maggie Rux
External Relations Coordinator
Kaylee Madigan
Office Manager

Cover Photo: Laprele Creek Ranch
Converse County

WELCOMED TO THE BOARD IN 2016-2017



BUDD BETTS

Budd lives outside of Dubois with his wife Emi where he is the managing partner of the Absaroka Ranch. He was a past-member of the Wyoming House of Representatives-Majority Whip, past-Chairman of the Wyoming Community Foundation, current Board Member of Wyoming Outfitters and Guides Association, and current Board Member of the Dubois/Crowheart Community Foundation.



JENNIE GORDON

Jennie owns and operates the Merlin Ranch with her husband Mark, outside of Buffalo. She is currently a member of Class 15 Wyoming L.E.A.D.S, which develops the leaders of Wyoming’s agricultural communities.
Photo credit: Wyoming L.E.A.D.S.



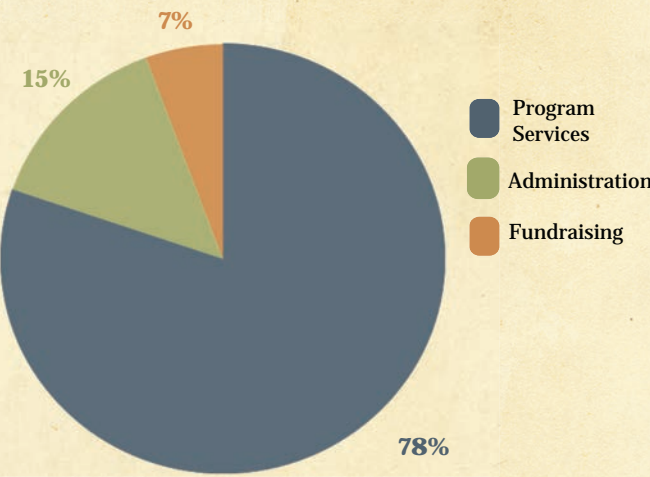
JANET MARSCHNER

Janet is the CFO of the Wyoming Business Council and a past Trustee of the Cheyenne Regional Medical Center. Janet has also served as a Board Member and past President of the Cheyenne Animal Shelter, Wyoming Wildlife Federation, Meridian Trust Federal Credit Union, and Cheyenne LEADS. Janet is the founder of Shoot and Cast, Inc, Yola and Boogy Fund, and Paw n’ Around Ranch.

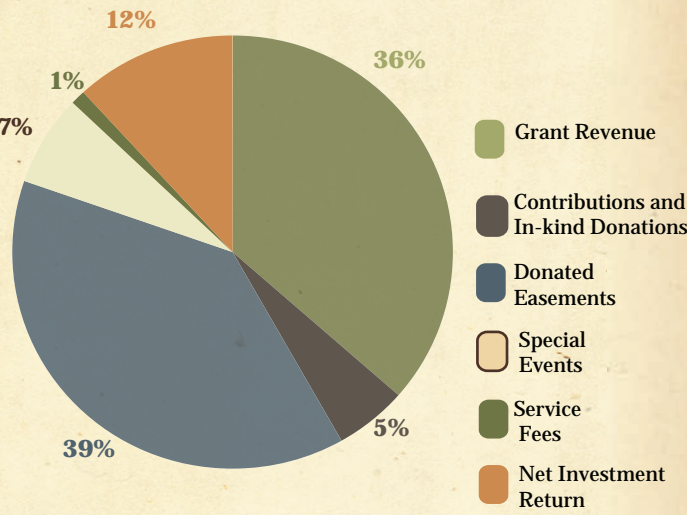
FISCAL YEAR 2016 - 2017

FISCAL YEAR 2016 - 2017 COMPLETED PROJECTS

EXPENSES



REVENUES



As of June 30, 2017

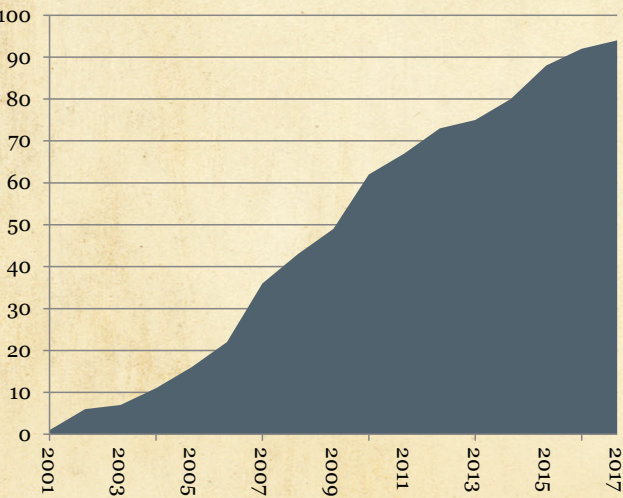
ASSETS

Current Assets	
- cash/cash equivalents	\$202,168
Contributions receivable	
- current portion	\$110,428
Furniture & equipment,	
net depreciation	\$13,608
Endowment net asset	\$549,968
Investments	\$2,029,827
Contributions receivable,	
net current portion	\$321,919
TOTAL ASSETS	\$3,227,918

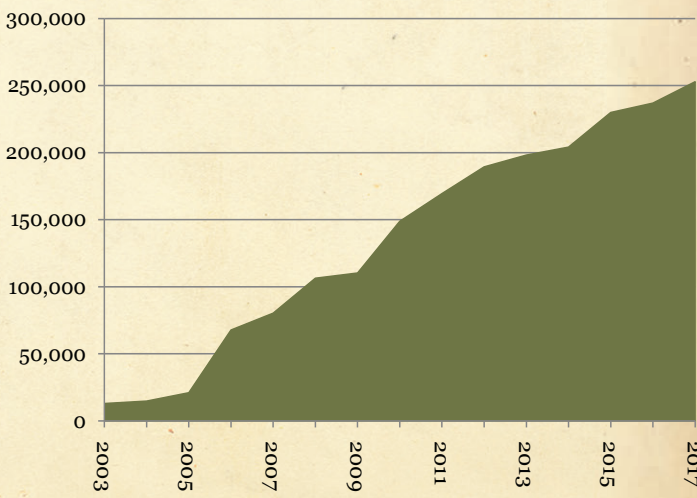
LIABILITIES AND NET ASSETS

TOTAL LIABILITIES	\$47,701
NET ASSETS	
Unrestricted	\$455,655
Temporarily restricted	\$2,174,594
Permanently restricted	\$549,968
TOTAL NET ASSETS	\$3,180,217
TOTAL LIABILITIES	
& NET ASSETS	\$3,227,918

RANCHES CONSERVED



ACRES CONSERVED



GOOSEBERRY CREEK RANCH II, WASHAKIE COUNTY

Closed 11/22/2016

The 1,450-acre Gooseberry Creek Ranch project is the second portion of the ranch to be conserved by WSGLT. The project was completed with our partners at the Wyoming Wildlife and Natural Resources Trust and the Wyoming Game and Fish. Dave Slover, owner of the ranch commented, "I am proud to have entered into this conservation easement with the Wyoming Stock Growers Land Trust, and their partners to preserve this land for ranching while simultaneously protecting wildlife habitat for future generations. What makes this unique is that it ties in with our previous easement, and those of neighbors, to create approximately 7 miles of contiguous riparian corridor that is conserved under easements with the Wyoming Stock Growers Land Trust."



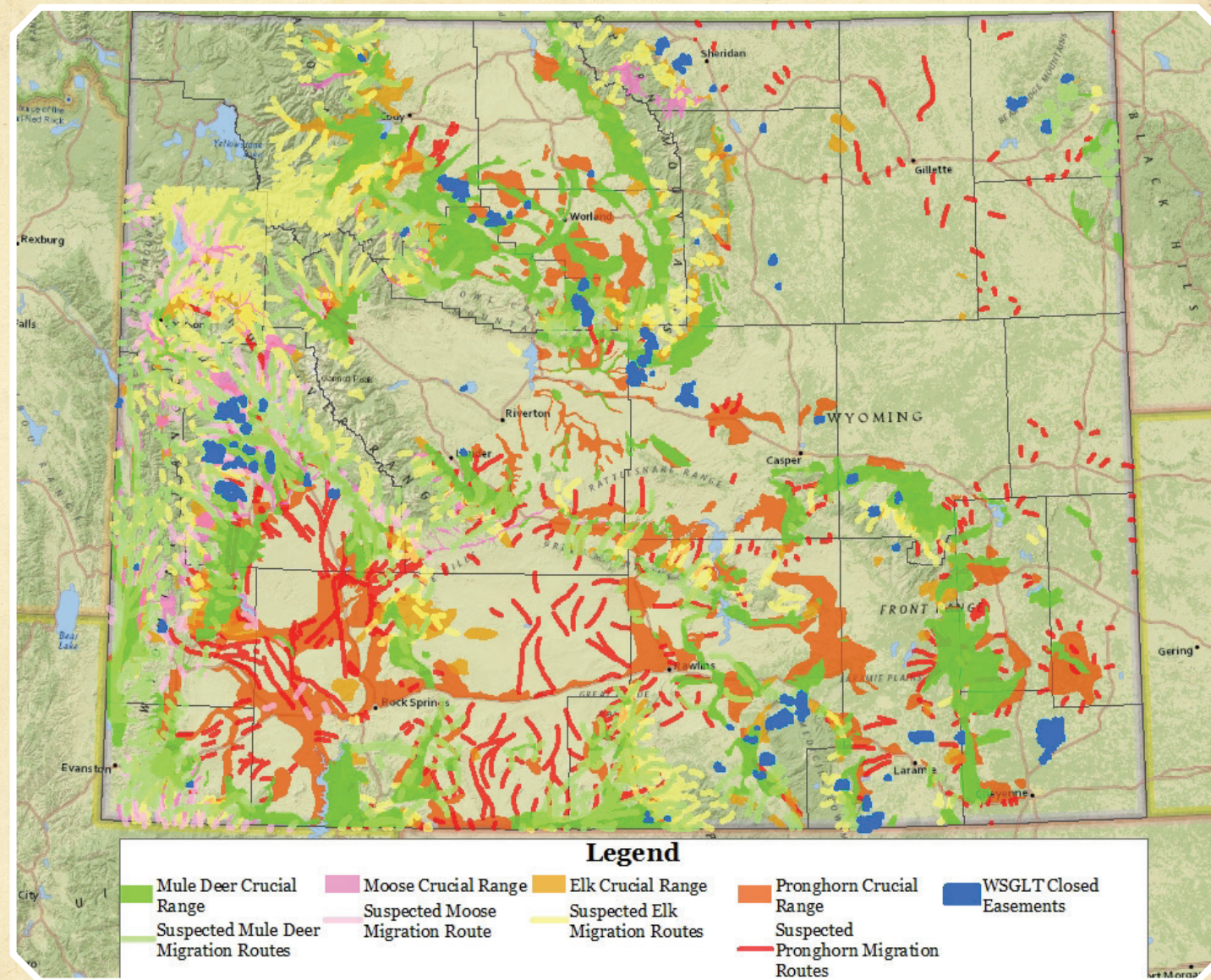
LAPRELE CREEK RANCH, CONVERSE COUNTY

Closed 12/30/2016

The 515-acre Laprele Creek Ranch conservation easement is located southwest of Douglas and adds to three other ranches conserved by WSGLT in Converse County. The ranch is encompassed by North Laramie Range Crucial Priority Area and protects the migration corridors of both mule deer and elk. Reid Lance Rosenthal, part owner and manager of the ranch spoke about the closing of the easement saying, "The ranch enjoys unique topography, resources, and occupies miles of key position in the LaPrele Creek Valley skyline and watershed. It is critical to both our spring pasture regimen, and as winter habitat to a variety of ungulate species. We are again delighted to work with the Wyoming Stock Growers Land Trust on preserving these special lands for future generations of people and critters!"



WILDLIFE NEED AG LAND CONSERVATION



- WSGLT holds **40%** of the conserved private lands in Wyoming.
- Total estimated annual public benefit of ecosystem services is **\$132,156,835**.
- Conservation easements provide \$4 to \$12 in public benefit. (Colorado State University)

Base Map Source: National Geographic
Wildlife Information: Wyoming Game and Fish Department
Map created by WSGLT staff in ArcGIS from ESRI.

WHERE A FAMILY'S LEGACY AND A MISSION COME TOGETHER

After making provisions for loved ones and friends, one or more charitable interests are often included in a deed, will or living trust. By giving a gift through a deed of a remainder interest, a will or a trust, individuals can help the Wyoming Stock Growers Land Trust conserve working ranches in Wyoming.

This process is known as planned giving. The plans made today will help define a family legacy and ensure that philanthropic wishes are carried out. Through a proper will, individuals can have a significant impact on the causes they care about, including the Wyoming Stock Growers Land Trust.

Donations made by will or other bequest effective at death are 100% deductible for estate tax purposes.

Donations are simple to make and may only require drafting a simple deed or codicil (amendment) to a current will. Many people are able to make larger gifts through their will than would be possible using current income.

RETIREMENT PLANS

Many financial advisors suggest using these funds to make charitable gifts to reduce the tax burden on heirs by reporting the amount withdrawn combines with an offsetting charitable donation.

SECURITIES

Giving appreciated securities (stocks, bonds and mutual funds) can generate additional tax savings. Such gifts are generally deductible for income tax purposes at their full current value if owned for longer than one year. They can be used to offset taxes up to 30% of adjusted gross income.

LIFE INSURANCE

The donation of a policy that has been paid for allows the donor to receive a tax deduction for its fair market value. A life insurance policy naming the Wyoming Stock Growers Land Trust as the irrevocable owner and beneficiary provides the donor with a tax deduction for the policy's cash value. Future payments to the Land Trust to cover the premiums on the policy can also be deducted. In each example above, you can name more than one charitable organization as a beneficiary.

BEQUEST

A bequest is made through a will or trust. Bequests of real estate can also be made through provisions in a deed. Typically, a bequest in a will or trust would specify that a dollar amount or percentage of your estate be left to the Wyoming Stock Growers Land Trust. The donation is exempt from federal estate tax and allows the donor use and control of the assets during his or her lifetime.

REAL ESTATE

Gifts of real estate can be made to the Wyoming Stock Growers Land Trust for the benefit of Wyoming's next generation of producers. A bequest of working land can be passed along to a young ranching family through our Ranchland Succession Program. Or individuals may choose to donate the property and retain a life estate, realizing the value of the gift during their lifetime and remaining on the land they love. Condos and houses in town can also be left to the Stock Growers Land Trust and the proceeds derived from their sale directed to support our mission.

LEGACY SOCIETY

Our Legacy Society includes individuals and families that have left the Wyoming Stock Growers Land Trust as a beneficiary in their will or trust. If you would like more information about our Legacy Society please let us know.

LEGACY SOCIETY MEMBERS

Jackie Griffith - Dr. John and Susie Lunt - Fred and Catherine Kusel -
Chris Machan - Georgene Lebar Charitable Trust - Marcia Gladstone

2016★2017 FISCAL YEAR DONORS

The Wyoming Stock Growers Land Trust would like to thank those individuals, businesses and organizations that helped us achieve our mission during the Fiscal Year: July 1, 2016 - June 30, 2017.

INDIVIDUALS

Ackerman, Allan & Martha
Alley, Lee & Ellen
Alley, Bo & Tara
Allred, Leron & Rosalyn
Ankeny, Bill & Terry
Anschutz-Rodgers, Sue
Bagley, Jody & Suellen
Bailey, Brandon
Baker, Burke & Carole
Barker, Richard & Linda
Barnett, Alan & Marge
Bartlett Greg & Heather
Bath, Nancy
Belinda, Steven
Benz-Plank, Lollie
Berger, Bob & Rosie
Berger, Jack & Diana
Bernstein, Joel & Gail
Betts, Budd & Emilie
Boelter, Richard & Ann
Boice, Jackie
Bolton, Charlie
Box, Chuck & Laurie
Brammer, Zachary
Brammer, Jay and Ray Ann
Breton, Jenny
Brolyer, Ed
Brooks, Stan & Claire
Brown, Duffy & Joy
Buckley, Danny & Debra
Burke, Warren
Campbell, Jason & D’Ron
Carruthers, Carly-Ann
Clark, Levi
Clark, Story & Bill Resor
Clinger, Charles
Cooper, Jerry
Corbett, Hal & Katie Curtiss
Cosner, Anna
Cotton, Scott
Coulter, Andrew
Cox, Matt & Margaret
Crozier, JR & Jonee
Crumpley, Elaine
Cuin, Don & Cecilia
Cunningham, Arnold
Dane, Mark & Lydia
Danvir, Rick
Day, Bob & Kathlyn
DeKracker, Luann
Detrick, Larry & Suzy
Devore, Janis
DeVore, Stan & Donna
Dilts, Barbara
Dinneen, Marietta
Dowling, Michael & Beverly

Duke, Ben & Laurette
Edmondson, Wayne
Edwards, Carrie
Elliott, Bob & Brenda
Engebretsen, Chuck & Mary
Engen, Nita
Epler, Reba
Esch, Luke & Amanda
Ewart, Howard & Nita
Fahsholtz, Wayne
Ferguson, Bill & Karen
Fetcher, Jay
Fieseler, Terry & Valerie
Fitzsimons, Blair & Joseph
Ford, Ryan
Fraley, Mike & Jana
Frank, Bobbie & Dan
Freeman, John & Theresa
Geis, Gerald & Gwen
Geis, Keith & Marie
Glenn, Erik & Shelby
Glode, Joe & Julie Evans
Gordon, Mark & Jennie
Gregory, Ryan & Bonnie
Grubb, Cody & Samantha
Haigh, Bob & Patricia
Harriet, Cheri
Hauge, Barbara
Healy, Mike & Sarah
Hearne, James & Margaret
Hendry, Rob & Leslie
Hewitt, Henry & Sue
Hill, William
Hirshfeld, Theo & Dawn
Hocker, Phil & Jean
Hoffman, Nancy
Holz, Bernard
Horning, David & Tressa
Horning, Rick & Mary
Hudson, Will & Annaliese Wiederspahn
Hunker, George & Paula
Hunter, Heath
Jacob, Shirley
Johnson, Robert & Glee
Johnson, Julie
Jones, Tom
Kirkbride, Dan & Lindi
Kraft, Jerry & Linda
Laird, Steven
Lerwick, Monte & Megan
Linehan, Patricia
Listen, Jim & Janet
Lockwood, Haley
Love, Kim & Mary Kay
Lummis, Cynthia
Lunt, Samuel & Deborah
Lunt, John & Nancy

Lykes, Mayo & Susan
Madigan, Joseph
Madigan, Kevin & Karen
Magagna, Jim
Marschner, Janet
Mcbride, Scott
McGinnis, Michael
McKee, Gwyn
McKinley, John & Kathleen
McPhee, Kevin & Shelly
McPhee, Ron
Mickelson, Brandy
Mickelson, James
Miller, Dale & Mira
Mocer, Nicole
Murchison, Reid & Linda
Neal, Scott
Nielson, Jim & Anne Young
Norris, Cathy
Oedekoven, Jason & Maureen
O’Neill, Bud
O’Toole, Eamon & Megan
Panos, Bill & Michelle Gauvin
Patch, Sherrie
Pearson, John & Jo Ann
Pendergast, Anne
Pexton, Trent
Pfister, Chris & Susan Lasher
Pheasant, Bruce
Phillips, Mantha
Pieters, Frances
Price, Carol
Purdy, James
Raynolds, Linda
Read, Verne Mary
Reimler, Tim & Jackie
Roberts, Kendall & James
Rosa, Robert & Theresa
Roscoe, Jim
Rux, Jean
Rux, Maggie
Rux, Megin
Scarlett, Dick & Maggie
Schacht, Eric & Brooklyn
Schalk, Steve & Dulcie
Schiffer, Tony & Linda
Schiffer, Dan
Schilling, Brian & Maggie
Schmidt, Marvin & Sheila
Schwieger, Paul & Beverly
Seyfert, Karen
Shepherd, Ruth
Sigel, Edward
Simpson, Al & Ann
Sims, Scott & April
Smith, Nels & Jeanette
Sommers, Albert & Susan

Souza, Jared & Rebecca
Sullivan, Michelle
Sun, Dennis & Peggy
Swanson, Tracy & Liz
Tarver, James & Jaime
Taylor, Bob & Suzanne
Thomas, Susan
Thompson, Stanley & Betty
Toll, Susan
Turner, John & Mary Kay
Turvey, Terry
Underriner, William & Mary
Vignaroli, Larry
Walsh, Miriam
Webb, Jerry
Weidel, Nancy
Welles, Priscilla
White, Bruce & Beth
Whitesel, Elizabeth
Wilson, Robert & Susan
Zaharin, Mara
Zeller, Jack & Nancy
Zielke, Jake
Zink, Andrea

BUSINESSES★ORGANIZATIONS

★FOUNDATIONS★GRANTS

Alexander Ranch
Allied Investment Advisors, LLC
Amazon Smile
Anadarko Petroleum Corporation
ANB Bank
Andrew Allen Charitable Foundation
Antler Motel
Apogee Foundation DAF
Arnjac Corporation
ASAP Capital Inc.
Backwards Distilling
Ballinger Rocking R Ranch, LP
Bar K Bar
Bear Lodge Cattle Company, Inc.
Beartrap Meadows
Big Goose Ranch
Big Horn Beverage
Black Tooth Brewing Co.
Bozeman Trail Gallery
Brush Creek Ranch
Buck Ranch
Bucking Buffalo Supply Co.
Burlington Northern Santa Fe
Burns Insurance
C & C Ranches, LLC
C Bar B Ranch
CC Enterprises - Choo-Choo Ropes
Central Valley Concrete & Central
Valley Trucking
Chase Brothers Properties
Cheyenne Frontier Days

Clarendon Ranch
Clark Country Ranch, LLC
Cottonwood Ranches
Davis & Cannon
DBA Aurelius Golf
Deseret Ranches/ Handcart Ranch
Devils Tower KOA
Devon Energy Corporation
Diamond Crown Cattle Co.
Disney World
DSH Ventures
Elkhorn Trading Company
Ellis Sheep Company
Farm Credit Services Of America
First Interstate BancSystem Foundation
First Interstate Bank
First Northern Bank of Wyoming
Fremont Motors
Frontier Iron Works
G&S Outdoor Living
Glen Powell Artworks
Goertz Family Wyoming Natural Beef
Gooseberry Creek Ranch, LLC
Grainger Charitable Fund
Gretchen Swanson Family
Foundation Inc.
Grindstone Cattle Company
Gunwerks, LLC
Hall and Hall
Halladay Motors Auto Group
Hidden Canyon Ranch LLC
Hilltop Leather
Holy Cow Couture
Hotel Wolf
Intermountain West Joint Venture
IXL Ranch
J Bar 9 Ranch
Jack Sorenson Fine Art
King Ranch
L. Patton Kline Family Foundation
Ladder Livestock Company, LLC
Land Trust Alliance - Western Program
Assistant
Landon’s Greenhouse & Nursery
Laramie GM Auto Center
Laramie Peak Motors
Life Management Advisors
Linton’s Big R Stores
Little Willow Traders
Lonabaugh and Riggs, LLP
Lou Taubert Ranch Outfitters
Luthi & Voyles, LLC
Manning Ranch
Medicine Bow Conservation District
Memory Laine Photography
Merlin Ranch
Mirr Ranch Group
Mountain Khakis
Mountain Vet Supply, Inc.
Murdoch’s Ranch and Home Supply

Murdock Cattle Company
New Frontier Ranches Inc
Nostalgic Signs
Old West Cedarmill
Orion Crossig Fine Art
Orvis
Oxbow Ranch
Pearson Real Estate Co., Inc
Pfister Land Company, LLC
Platte Valley Community Center
Posy Patch
Powder River Energy Corp.
Producers Livestock Marketing
Association
Purdy Family Foundation
R & R Traders Pewter
RE/MAX The Group
Red Mountain Ranch
Rocking Chair Foundation
Rocky Mountain Financial Group
Rolling Thunder Ranch, LLC
Saddle Tree Ranch
Samsville Gallery
Saratoga Encampment Rawlins
Conservation District
Shively Hardware
Soaking Stone Coasters
Sommers Herefords, LLC
Sportsman’s Warehouse of Cheyenne
Stone Feather Road
Sundance State Bank
TE Ranch
Thaler Land & Livestock
The Anschutz Family Foundation
The Betts Foundation
The Brooks Foundation
The Colorado Avalanche / Kroenke
Sports Enterprises
The Conservation Fund
The Curiosity Shoppe
The Fanwood Foundation
The Jackson Hole Playhouse
The Nature Conservancy
The Ox Ranch
The Pronghorn Agency, LLC
Thirty One Bar Ranch Co.
Torrington Livestock Markets
Trader Barb’s Gallery
Ty Cattle Co,
Tzigane
U.S. Fish and Wildlife Services
U.S. Senator
US Bank
UTE Creek Cattle Company
Warren Livestock Company
Western Conservation Partners
Laprele LLC.
Western United Realty
Weston Wineries
Wheel Of Fortune

Wyoming Department of Workforce Services
Wyoming Game and Fish Department
Wyoming Livestock Roundup
Wyoming Stock Growers Land Trust
Wyoming Wildlife and
Natural Resource Trust
Wyoming Wildlife Foundation
Wyoming Wool Growers Association
YMCA Of The Rockies

IN HONOR

In Honor of Hall & Hall

- Susan Toll

In Honor of Pat O'Toole

- Jay Fetcher

In Honor of Trigg J. Newton

- Barbara Dilts

IN MEMORY

In Memory of Richard W. Johnson

- Julie Johnson

In Memory of Craig Thomas

- Susan Thomas

In Memory of Dr. John G. Lunt

- John Lunt

- Ruth Shepherd

- Elizabeth Whitesel

In Memory of Dick Ballinger

- Ballinger Rocking R Ranch, LP

In Memory of Juanita Morehead

- Karen Seyfert

In Memory of Russell Rux

- Jean Rux

This list reflects donations received July 1, 2016 through June 30, 2017. We apologize for any mistakes or omissions. Please contact us with any corrections so we can update our records and thank you more appropriately.



We would like to thank Fremont Motors of Casper for donating vehicles for our use over the past 7 years!

They always give us dependable and durable vehicles that get us through some of the roughest and most secluded places in the state.

YOUR SUPPORT MAKES

A DIFFERENCE

Thank you for supporting the Wyoming Stock Growers Land Trust.

YOUR DONATIONS MATTER



Your donations help us work to conserve farms and ranches across the state that play crucial roles in the culture and economy of Wyoming.



Your support helps our organization remain strong and healthy as we continue to grow.



Your donations help offer agriculture and conservation education opportunities around the state.

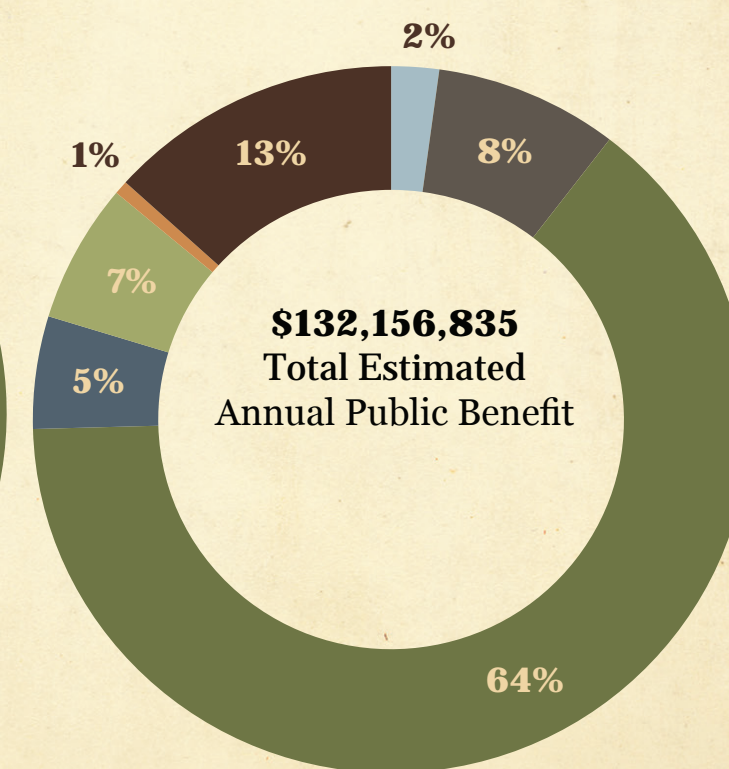
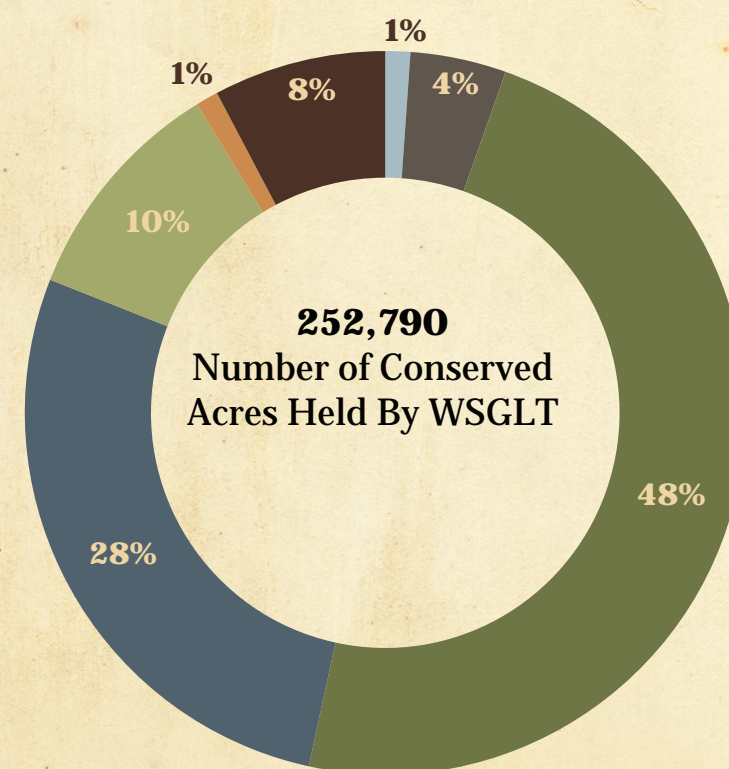
ECOSYSTEM SERVICES

Conservation easements are a key tool in the sustainability of Wyoming's farms and ranches. The conservation of these properties provide a wide range of public economic and ecological values known as ecosystem services.

These services are the public benefits of undeveloped lands. We can all agree that Wyoming's wide-open spaces make this unique and beautiful state a better place to live.

*More information on these benefits and the categories illustrated below can be found at http://www.cnhp.colostate.edu/download/documents/2017/ColoradoStateU_CE-ROI-study_web.pdf

Ecosystem Service Categories





**WYOMING
STOCK GROWERS
LAND TRUST**

P.O. Box 268
Cheyenne, WY 82003-0268
Phone: 307.772.8751
Email: info@wsgalt.org
www.wsgalt.org

NON PROFIT ORG.
U.S. POSTAGE
PAID
CHEYENNE, WY
PERMIT NO. 75

Please contact us if you would like to be removed from our mailing list.

252,790 92 70
Acres held by WSGLT Easements Families

